



Sridhar Verose, Chair  
Richard Adler, Vice Chair

## City of San Ramon Infrastructure Committee Agenda

San Ramon City Hall  
Training Room, First Floor  
7000 Bollinger Canyon Road

April 10, 2026  
3:00 PM  
Regular Meeting

Agenda Questions: Please contact the City Clerk's Office at  
(925) 973-2539 or [cityclerk@sanramon.ca.gov](mailto:cityclerk@sanramon.ca.gov).

Please refer to the end of the agenda to review options for participation in the meeting.  
This agenda is posted in accordance with Government Code Section 54954.2(a).

### 1. Call to Order/Roll Call

### 2. Public Comment

At this time, members of the public are encouraged to address the Committee on any item not already included on the agenda. Comments should not exceed 3 minutes. No Committee action can be taken at this meeting on issues raised during Public Comment.

### 3. Approval of Minutes

#### 3.1. Infrastructure Committee Regular Meeting - March 27, 2025

Recommendation: Approve Minutes

### 4. Unfinished Business

### 5. New Business

#### 5.1. Five-Year Pavement Management Plan Update

Recommendation: Review and Provide Comments to Staff

*Staff Report by Shane Hsieh, City/District Engineer*

### 6. Committee Member Comments

### 7. Adjournment

## How to View or Participate in the Meeting

The public is invited to participate in the meeting using any of the following methods:

### **In Person:**

Members of the public can provide in-person comments at the meeting. To make a request for disability-related accommodation to participate in the meeting, please contact the City Clerk's Office 48 hours in advance of the meeting at [cityclerk@sanramon.ca.gov](mailto:cityclerk@sanramon.ca.gov).

### **Written Communication by Email:**

Public comments may be submitted via e-mail to [cityclerk@sanramon.ca.gov](mailto:cityclerk@sanramon.ca.gov) at least 2 hours prior to the start time of the meeting. Please include "Public Comment" in the subject line. In the body of the email please include your name and the item you wish to comment on. Written public comment will not be read aloud during the meeting.

### **Attendee Conduct:**

There will be zero tolerance for any person addressing the Committee making profane, offensive and disruptive remarks, or engaging in loud, boisterous, or other disorderly conduct, that disrupts the orderly conduct of the public meeting. Specifically, it is important for all speakers to adhere to the following guidelines for participation in this meeting:

- a. No profanity or obscenity.
- b. Refrain from personal threats or attacks.
- c. Refrain from hateful epithets and demeaning language based on any person's race, religion, sexual orientation, ethnicity, gender, or disability.
- d. Respect all people that are present or watching.

At the discretion of the Chair, a speaker may forfeit speaking time for any of the following reasons:

- a. Exceeding the allotted time to speak;
- b. Yelling, screaming, or other behavior that renders this Committee unable to continue the meeting;
- c. Excessive profanity or slander;
- d. Specific threats or "fighting words" that incite violence; or
- e. Speech that is outside the subject matter jurisdiction of the Committee or the specific agenda item in which you are speaking.

**While the City of San Ramon ensures the First Amendment rights of its citizens, we do not accept nor endorse any offensive or hateful comments made during our meetings. The City of San Ramon celebrates the diversity of our community, and we strive to be a welcoming and open community for all.**

**MINUTES OF THE  
CITY OF SAN RAMON – INFRASTRUCTURE COMMITTEE  
March 27, 2025**

**1. CALL TO ORDER**

Chair Adler called the regular meeting of the Infrastructure Committee to order at 3:31 p.m.

<b>Attendee Name</b>	<b>Title</b>	<b>Status</b>
Richard Adler	Chair	Present
Marisol Rubio	Vice Chair	Present

Also in Attendance: Scott Koll, Assistant City Manager; Brian Bornstein, Public Works Director; Shane Hsieh, PW Division Manager; Gary Manuel, Program Manager; Amy Amiri, Sr. CIP Analyst; Suzy Edwards, Associate Engineer; Dave Watson, Maintenance Supervisor; and Debbie Hince, Administrative Coordinator

**2. PUBLIC COMMENT**

2.1 Chair Adler opened public comment. There was no public comment. Chair Adler closed public comment.

**3. MINUTES APPROVAL**

3.1 Minutes of the May 8, 2024 regular meeting approved as written (Rubio/Adler). Passed unanimously 2-0.

<b>RESULT: Minutes Accepted (unanimous)</b> <b>AYES: Rubio/Adler</b>
---

**4. COMMITTEE BUSINESS**

4.1 Five-Year Pavement Management Plan Update

Shane Hsieh and Suzy Edwards provided a presentation to the Committee on the Five-Year Pavement Management Plan.

Chair Adler opened public comment. There was no public comment. Chair Adler closed public comment.

The Committee agreed with the current Five-Year Plan as presented and stated to continue to look for grants/other funding methods.

4.2 Dougherty Valley Tree Management Program Update and Funding for FY 2025/26

Gary Manuel provided a presentation to the Committee on the DV Tree Management Program.

Chair Adler opened public comment. There was no public comment. Chair Adler closed public comment.

The Committee accepted the report and recommended moving forward with the option of \$61,425 to complete the work on Chiltern Lane, Wells Lane, and Stratton Way, and any emergency work as needed.

#### 4.3 Infrastructure Maintenance Fund Update

Brian Bornstein gave a brief update on the Infrastructure Maintenance Fund (IMF) and the proposed transition and restoration back to the original General Fund terminology to fund facility and infrastructure projects, and to dissolve the IMF in FY 2025/26.

Chair Adler opened public comment. There was no public comment. Chair Adler closed public comment.

The Committee requested more information before making a final decision on modifications to the IMF.

#### 5. **COMMITTEE MEMBER COMMENTS**

None

#### 6. **UNFINISHED BUSINESS**

None

#### 7. **ADJOURNMENT**

Chair Rubio adjourned the meeting at 5:36 p.m.

The next meeting of the Infrastructure Committee to be determined.



## Infrastructure Committee Staff Report Item No. 5.1.

**Date:** April 10, 2026

**To:** San Ramon Infrastructure Committee

**From:** Brian Bornstein, Department Director  
Chen-Hsuan (Shane) Hsieh, City/District Engineer

**Subject:** Five-Year Pavement Management Plan Update

---

### **Executive Summary:**

The Five-Year Pavement Management Plan provides a list of streets anticipated to be treated in San Ramon over the next five years. The Plan is based on the available Five-Year Pavement Management Program Budget (including Measure J Funds, Gas Tax or Highway Users Tax Account (HUTA) Funds, Refuse Vehicle Impact Fee). This Plan was developed using the “critical point” pavement management approach, and the goal to prioritize and treat all low PCI streets in the City within the Five-Year Plan. The City’s current overall average Pavement Condition Index (PCI) is 74. Based on proposed funding, the PCI is anticipated to drop gradually to 71 by the end of 2031. Factors influencing the PCI and a discussion of areas to be treated over the next five years are included below.

### **Recommendation:**

The Infrastructure Committee’s role is to review the Five-Year Pavement Management Plan Update and provide comments to staff.

### **Background:**

#### ***Pavement Condition Index (PCI)***

The City uses a Pavement Management Program (PMP) to assist with prioritizing streets to include in maintenance and rehabilitation projects. As part of this Program, the City is required to regularly inventory the condition of the streets and assign each a rating from 0 to 100. This rating is referred to as the Pavement Condition Index (PCI).

PCI is an objective and rational, although not perfectly precise, basis for determining pavement conditions and establishing maintenance priorities. The method is based on a visual survey of various types of distresses in a pavement on selected parts of a given street. The result of the survey is a numerical value between 0 and 100 for a specific street section, with 0 representing the worst possible condition and 100 representing the best possible condition. PCI averages are reported as a whole number; variations of one or more

points in any given year should be expected.

PCI is a budgeting and planning tool, not a design tool. Therefore, projected treatments may change when staff conduct detailed inspections prior to design. Given the timing of treatment methods, this may result in the schedule of treatment changing by one to two years and occasionally more. In order to reduce changes and maintain cost efficiency, staff are endeavoring to do more detailed follow-up inspection earlier in the design cycle, as staff availability allows.

The City utilizes an independent engineering consultant to perform the Pavement Condition Survey every two years to determine the condition of all pavement sections throughout the City. Staff then utilizes the Metropolitan Transportation Commission’s (MTC) Pavement Management System (PMS) StreetSaver software to help prepare a Five-Year Pavement Management Plan, which identifies likely repair locations and types. The StreetSaver software incorporates data gathered from most agencies in the Bay Area, as well as many other agencies in other locations. As such, it provides a powerful tool for predicting pavement life and treatment costs.

In February 2024, staff applied for a grant through the Pavement Management Technical Assistance Program (P-TAP) Round 25. The City received Surface Transportation Program (STP) funding of \$68,000. By combining this grant with the City’s local matching funds of \$17,000, MTC and City staff jointly retained Pavement Engineering, Inc. (PEI) to perform the 2025 Pavement Condition Survey of the City’s roadways. As part of the Survey, an updated PCI was assigned to each pavement section. The overall average PCI was calculated based on the updated survey of each street section. The current overall PCI, per roadway classification and based on the survey results, is summarized below. The PCI will be evaluated again in 2027 under P-TAP Round 27.

**Current Conditions**

The current data and condition of the City’s streets are as follows:

Total centerline miles	242.3
Total lane miles	506.9
Total pavement area	43.4 million square feet
Parking Lot area	1.1 million square feet
System Replacement value	\$748.3 million
Current Average PCI	74
Current Average PCI Arterials	70 (27% of total pavement area)
Current Average PCI Collectors	74 (13% of total pavement area)
Current Average PCI Residential	76 (58% of total pavement area)

Current Average PCI Other	74 (2% of total pavement area)
---------------------------	--------------------------------

**Critical Point Approach and Implementation Strategies**

In 2018, based on staff’s recommendation, the City adopted a “critical point” approach to pavement maintenance. The “critical point” refers to implementing a pavement preservation or rehabilitation on a given street just prior to that street’s condition deteriorating to the point where it requires the next most expensive treatment. This method maximizes the useful life obtained from the original pavement and each successive treatment while minimizing the cost of each successive treatment. Key recommendations for the approach include:

1. Maximizing the use of a “critical point” strategy to get the most life out of a given pavement prior to it requiring more substantial and costly rehabilitation treatment.
2. Continuing to use a modified “pave by neighborhood” approach to help contain costs by concentrating the work into selected locations, but with larger areas and with only select streets subject to treatment.
3. Combining critical point analysis and identifying select “low PCI” streets and “special case” streets to address those streets in the worst condition or with special problems. Low PCI streets have been defined as follows:

<b>Functional Classification (FC)</b>	<b>Low PCI Defined</b>
Arterials (A)	PCI less than 50
Collectors (C)	PCI less than 45
Residential/Local Streets (R)	PCI less than 30

4. Undertaking an extensive preventative maintenance program on newer streets, predominantly within the Dougherty Valley, which are approaching the critical point to where low-cost preventative maintenance treatments will no longer be effective.

In addition, staff began implementing new strategies to improve cost-effectiveness, including, when possible:

- Preparing plans, specifications, and engineer’s estimates (PS&Es) in-house, whenever possible, reducing design costs;
- Minimizing subcontractor work, by utilizing in-house staff for necessary crack seal work prior to paving, where appropriate;
- Obtaining separate bids for asphalt concrete (AC) and preventative maintenance treatments;
- Minimizing subcontractor work by obtaining separate concrete repair bids for necessary curb ramp construction for compliance with the Americans with

Disabilities Act (ADA), including necessary sidewalk, curb, gutter, and valley gutter concrete repairs;

- Moving streets previously done within the Stop Gap Program into the Pavement Management Project, to the extent practical;
- Enhancing coordination between Public Services street maintenance staff and Engineering staff to improve efficient provisions of in-house Stop Gap work (pothole repair, crack sealing, and minor patching);
- Writing bid documents with more flexibility in terms of working hours and lane closures, to pavement contractors, as long as it does not affect construction safety;
- Increasing the amount of preventive maintenance done as a portion of the whole including increasing crack sealing operations;
- Proposing to conduct enhanced pre-design evaluation of pavement conditions to help verify appropriate pavement treatment methods further in advance to help reduce changes during the design phase; and
- Evaluating paving technologies that have not been used in the City to determine if they can provide better solutions. A product of such evaluations will be the increased use of Rubberized Cape Seals on residential streets throughout the City.

## ***Pavement Funding***

### Projected Five-Year Pavement Management Program Budget

Funding for Pavement Management is provided by several sources, which are summarized below and shown on the projected Five-Year Pavement Management Program (PMP) Budget in Attachment A. The attachment shows projected Federal, State, and Local funds per fiscal year. The anticipated funding sources are:

- Highway Users Tax Account (HUTA) or Gas Tax, which includes the Road Repair and Accountability Act of 2017 (SB-1); and
- City's Refuse Vehicle Impact Fee (RVIF).

The City's Measure J funds are discussed below.

In addition to the funding shown, the City receives funds from utility companies from time to time as in-lieu fees to compensate for pavement damage. These fees are most commonly collected in accordance with the City's Pavement Cut Moratorium Ordinance when utility companies damage recently paved streets. The funds are not shown for future years because they cannot be easily predicted and the amounts are usually minimal compared to the overall volume of work

The deductions, shown in Attachment A, account for administrative and General Fund overhead per fiscal year, as well as a set-aside contingency of 20% of the combination of upcoming fiscal year's Gas Tax and Measure J Funds to secure proper cash flow and variance in forecasted revenue projections. After deductions are applied, the table shows

the projected distribution of the available funds per year into the different City programs and/or projects.

### Contra Costa County Return to Source Measure J

Measure J is the Contra Costa County's half-cent transportation sales tax through Year 2034. For the City, Measure J represents approximately \$1.3M to \$1.5M for different City programs and/or projects. Since FY 2021/22, this source of funding has been eliminated in order to pay back a \$9.2M State Transportation Improvement Fund (STIP) loan as well as advanced \$4M of City's Measure J revenue to help pay for the Bollinger Canyon Road/Iron Horse Trail Bicycle Pedestrian Overcrossing Project (CIP 905530). The payback will conclude by the end of 2029. These funds were partially offset by the reallocation of approximately \$4.6M in Certificate of Participation and General Fund money to PMP 2021 and PMP 2022.

### Refuse Vehicle Impact Fee (RVIF)

The purpose of the RVIF is to recoup the costs associated with impacts on the pavement by heavy refuse collection trucks. These vehicles account for approximately 46% of vehicle loads on residential pavements. The Pavement Management Program started to receive RVIF funds in FY 2018/19 in the amount of \$1.369M. The Fee resulted in the addition of \$1.529M in FY2019/20, and a projected flat fee of \$1.5M annually starting in FY2020/21, subject to an inflation adjustment, for the Pavement Management Program only.

From 2021 to 2024, the RVIF fluctuated with the City Council-approved Contract Amendment with Alameda County Industries of San Ramon, Inc. (ACI) for solid waste collection services, addressing ACI's financial challenges exacerbated by the COVID-19 pandemic. It is anticipated that the RVIF will remain at approximately \$1.5M for the next 5 years.

### ***Pavement Management 2026 (CIP 000017)***

The Pavement Management 2026 Project (CIP 000017) incorporates the treatment of hot mix asphalt at the following locations:

- Crow Canyon Road between Bollinger Canyon Road and San Ramon Valley Boulevard
- Crow Canyon Road between Alcosta Boulevard and Crow Canyon Place
- San Ramon Valley Boulevard between Montevideo Drive and Pine Valley Road
- Omega Road between Faria Preserve Parkway and 330 feet north of Deerwood Road
- May Court
- Northland Place between May Way to the end
- San Blas Place
- Sota Place

***Pavement Management Projects 2027 – 2031***

Streets selected for treatment between 2027 and 2031 are listed in Attachment B and shown in Attachment C. These are based on the overall projected Five-Year Pavement Management Program Budget shown in Attachment A.

The City received favorable bid results in the 2024 and 2025 construction cycles. The realized savings are reallocated to supplement the budgets for the planned 2028 pavement rehabilitation project for Bollinger Canyon Road (from East Branch Parkway to Monarch Road) and Alcosta Boulevard (from Norris Canyon Road to Pine Valley Road).

PMP 2031 was added to the Five-Year Plan as the fifth year. It will focus on preventative maintenance.

This list of planned streets to be paved will be subject to yearly revisions based on observations of the actual condition of the street, analysis of its rate of deterioration, selection of other streets in the area, market conditions, cash flow strategies, and other factors.

***City-Owned Parking Lots and Other Projects***

In addition to maintaining streets in the public right-of-way, funds from Measure J and Gas Tax also pave parking lots, repair sidewalks, replace curb ramps, and undertake “stop gap” work. The City currently maintains 33 parking lots, approximately 1.1 million square feet, located at various facilities. The parking lots are included in the Pavement Condition Survey. The PCI of the parking lots currently ranges from 43 to 90. Staff schedules work on an as-needed basis and in those years where the PMP project heavily contains preventive treatments such as slurry seal or micro-surfacing. The following City-owned parking lots are targeted for treatment under this Five-Year Pavement Management Plan Update:

<b>Parking Lot</b>	<b>Treatment Year</b>	<b>Current PCI</b>
Sports Park	2027	71
Tassajara Ridge Staging	2027	62
Service Center – Crow Canyon Road	2029	50
Senior Center – Alcosta Blvd	2029	62
Athan Downs Park	2031	68
Coyote Crossing Park	2031	65

***Long-Term Projections***

## Projected PCI

The City's current overall average Pavement Condition Index (PCI) is 74. Based on proposed funding, the PCI is anticipated to rise to 76 by the end of 2026 and drop to 71 by the end of 2031. A graph of the anticipated PCI is shown on Attachment D. Estimating funding at \$7.8 million beyond five years, the PCI is estimated to fall to 68 by the end of 2035.

## Other Impacts

In recent years, the City's Pavement Management Program has been funding other elements not directly related to roadway pavement treatments. This has reduced the available funds from the Program and has the potential to reduce funds further in the coming years. These other elements include curb ramp construction for compliance with the Americans with Disabilities Act (ADA), sidewalk repairs, and bike lanes and green conflict zone markings. The costs of ADA compliance and restriping to accommodate for new bike lane standards (with some limitations) have been included in the current five-year analysis. Other elements, such as Green Infrastructure (GI), have not been included, and the extent to which they impact the available funds will result in reductions in the number of streets treated and commensurate reductions in the City's PCI. Each of these elements is discussed briefly below.

1. *ADA Compliance* - In 2013, the Department of Justice and the Department of Transportation issued ADA requirements to provide or upgrade curb ramps when streets, roads, or highways are altered through resurfacing. The cost of ADA curb ramps has been as high as 7.5% of the total cost of the projects.
2. *Bicycle Master Plan* - One element competing for funds from the Pavement Management Program is funding to implement the Bicycle Master Plan (BMP) improvements. This includes the cost of restriping to comply with and implement the BMP and current standards for bicycle lanes, including green bike lanes, as well as other improvements. Staff continue to include bicycle infrastructure improvements in the PMP projects as this is the most cost-effective way to implement these upgrades.
3. *Green Infrastructure* - Green infrastructure is intended to treat stormwater at its source to eliminate pollutants while delivering environmental and social benefits. The Regional Water Quality Control Board (RWQCB) has adopted the third reissuance of the Permit - MRP 3.0, which was amended in October 2023. MRP 3.0 requires local jurisdictions to treat the runoff from any new pavement projects that add significant impermeable surface, reconstruct a road, or repave a road with asphalt concrete overlays or inlays. The cost implications of these requirements are difficult to predict as they depend on numerous factors - terrain, available land, or right-of-way to provide treatment areas, conflicts with bicycle lanes, minimum road and travel lane widths, traffic volumes, utilities, and other factors. Requirements regarding GI may continue to evolve and intensify.

## Target PCI and Alternative Funding

The long-term projections indicate that the City's pavements will continue a gradual decline from the current "good" condition to "fair" over the next 10 years. A "good" condition is a PCI between 70 and 79; and between 60 and 69 is a "fair" condition.

The deterioration in overall pavement quality is a gradual process, and some decline in overall PCI can be borne without widespread impacts. However, it must be noted that the least expensive pavement to maintain is a good pavement. As the City's overall PCI lowers, the cost to maintain that pavement at the new lower level will be even higher than that to keep the current level. In addition, as the overall PCI deteriorates, a progressively larger number of streets will fall into one of the "low PCI" categories. This will limit flexibility in determining the best use of funding, resulting in lower efficiency and yet higher costs. In addition, the requirement of MRP 3.0 as discussed above poses a major new threat to pavement management, especially when streets deteriorate to the point that asphalt concrete overlays or inlays, or pavement reconstruction is required.

Based on the above logic, the Infrastructure Committee and City Council previously set a target PCI range of 75 to 80 overall. Staff estimate that the annual funding shortfall to maintain the pavement at the low end of this target is approximately \$5.9M for the next 10 years. Even if the target were adjusted to a PCI of 72 (to avoid falling into an overall "fair" condition), a shortfall of approximately \$3.9M per year remains.

### **Fiscal Impact:**

The Projected Five-Year PMP budget is shown in Attachment A. The Five-Year Pavement Management Plan is primarily funded by the Highway Users Tax Account (HUTA) or Gas Tax (including SB-1), and the Refuse Vehicle Impact Fee (RVIF). Notably, the plan assumes no supplemental funding from the General Fund. The approved Five-Year PMP will be incorporated into the Draft Five-Year 2026-2031 Capital Improvement Program.

### **Alternative Option(s):**

The Committee may provide alternative directions to staff regarding the Five-Year Pavement Management Plan, including:

- **Adjustment of Service Level Targets:** Providing directions to staff to refine the PCI target range to align with current fiscal constraints.
- **Alternative Funding Strategies:** Directing staff to identify or evaluate additional funding sources to maintain the service levels established in previous planning cycles.
- **No Action:** The Committee may choose to move the plan forward as presented; however, current funding levels are projected to fall short of the previously established service level targets over the five-year horizon.

### **Next Steps:**

Staff will incorporate comments from the Infrastructure Committee and include any

recommendations into the Draft Five-Year 2026/27 – 2030/31 Capital Improvement Program.

- 1. Staff will continue to seek grant funding for Pavement Management Projects.
- 2. Staff will provide updates during FY 2026/27 on the Pavement Management Program and will update the Five-Year Pavement Management Plan in 2027.

**Attachment(s):**

- A. Projected Five-Year PMP Budget (FY26/27 – FY30/31)
- B. List of Streets and Street Sections to be treated 2026 – 2031
- C. Projected Five-Year PMP Maps (FY 26/27 – FY 30/31)
- D. Five-Year Pavement Condition Index (PCI) Projections

Projected Five-Year PMP Budget (FY 2025/2026 to FY 2030/2031)

	2025-26	2026-27	2027-28	2028-29	2029-30	2030-31
<b>FUNDING</b>						
Beginning Balance Measure J Funds and in lieu as of 7/1/2025 (Fund 213)	\$ 208,911	\$ -	\$ -	\$ -	\$ -	\$ -
Beginning Balance Gas Tax Huta Funds as of 7/1/2025 (Fund 208)	\$ 3,950,216	\$ -	\$ -	\$ -	\$ -	\$ -
Beginning Balance RFIV 7/1/25 (Fund 217)	\$ 2,055,332					
Unallocated/unused funds from previous contracts year	\$ 6,214,458	\$ 2,255,202	\$ 5,815,711	\$ 103,101	\$ 134,903	\$ 274,985
Unencumbered funds expected to be returned to source (PMP) & Stop Gap	\$ -	\$ 1,735,195	\$ -	\$ -	\$ -	\$ -
Unencumbered funds expected to be returned to source (PMP) - RVIF	\$ -	\$ 2,749,996				
Expected Measure J Funds	\$ 64,690	\$ -	\$ -	\$ -	\$ 764,038	\$ 1,528,076
Expected Gas Tax Huta Funds	\$ 4,654,362	\$ 4,833,707	\$ 4,833,707	\$ 4,833,707	\$ 4,833,707	\$ 4,833,707
Available and Expected RVIF Funds	\$ 1,522,500	\$ 1,522,500	\$ 1,500,000	\$ 1,500,000	\$ 1,500,000	\$ 1,500,000
Received in-lieu fees since 7/1/25	\$ 178,623	\$ -	\$ -	\$ -	\$ -	\$ -
Expected in-lieu fees in addition to above	\$ -	\$ -	\$ -	\$ -	\$ -	\$ -
General Fund Contribution	\$ -	\$ -	\$ -	\$ -	\$ -	\$ -
<b>Total Funds Expected this year</b>	<b>\$ 12,634,634</b>	<b>\$ 13,096,600</b>	<b>\$ 12,149,418</b>	<b>\$ 6,436,808</b>	<b>\$ 7,232,648</b>	<b>\$ 8,136,768</b>
<b>DEDUCTION OR ALLOWCATIONS</b>						
Sidewalk Repair	\$ 250,000	\$ -	\$ 250,000	\$ -	\$ 250,000	\$ -
Materials and staff for Public Services - one-time allocation	\$ -	\$ -	\$ -	\$ -	\$ -	\$ -
Stop Gap Projects - Crack Seal and Hot Mix	\$ 710,000	\$ -	\$ 400,000	\$ -	\$ 400,000	\$ -
Traffic Calming	\$ -	\$ -	\$ 10,000	\$ 10,000	\$ 10,000	\$ 10,000
20% withholding from Measure J for cash flow	\$ 12,938	\$ -	\$ -	\$ -	\$ -	\$ -
20% withholding from Gas Tax for cash flow	\$ 930,872	\$ -				
General Fund Overhead	\$ 300,000	\$ 300,000	\$ 300,000	\$ 300,000	\$ 300,000	\$ 300,000
Administration	\$ 175,621	\$ 180,890	\$ 186,316	\$ 191,906	\$ 197,663	\$ 203,593
<b>Total Non-PMP Deductions</b>	<b>\$ 2,379,431</b>	<b>\$ 480,890</b>	<b>\$ 1,146,316</b>	<b>\$ 501,906</b>	<b>\$ 1,157,663</b>	<b>\$ 513,593</b>
<b>PMP and Similar Pavement Projects</b>						
Available for PMP and Similar Projects	\$ 10,255,202	\$ 12,615,711	\$ 11,003,101	\$ 5,934,903	\$ 6,074,985	\$ 7,623,175
Existing and Anticipated Allocations -Crow Canyon Road	\$ -	\$ -	\$ -	\$ -	\$ -	\$ -
Annual PMP 2025 Slurry	\$ 1,000,000	\$ -	\$ -	\$ -	\$ -	\$ -
Annual PMP 2026 AC	\$ 7,000,000	\$ 800,000	\$ -	\$ -	\$ -	\$ -
Annual PMP 2027 slurry		\$ 6,000,000	\$ -			
Annual PMP 2028 AC	\$ -		\$ 10,900,000			
Annual PMP 2029 slurry				\$ 5,800,000		
Annual PMP 2030 AC					\$ 5,800,000	\$ -
Annual PMP 2031 slurry						\$ 7,500,000
Roll over Available for next year	\$ 2,255,202	\$ 5,815,711	\$ 103,101	\$ 134,903	\$ 274,985	\$ 123,175

City of San Ramon  
5-Year Pavement Management Plan  
FY 2026/2027 - 2030/2031  
(Sorted by Construction Year, and Alphabetical Order)

**ATTACHMENT B**

YEAR	ROAD NAME	BEGIN LOCATION	END LOCATION	FC	PCI PRIOR	STREETSAYER ESTIMATED TREATMENT	PCI AFTER
2026	CROW CANYON RD (EB)	BOLLINGER CYN RD	TWIN CREEKS DR	A	43	LIGHT REHABILITATION	100
2026	CROW CANYON RD (EB)	TWIN CREEKS DR	SR VALLEY BLVD	A	37	LIGHT REHABILITATION	100
2026	CROW CANYON RD (EB)	CROW CANYON PL	CAMINO RAMON	A	57	HEAVY MAINTENANCE	68
2026	CROW CANYON RD (EB)	CAMINO RAMON	ALCOSTA BLVD	A	43	LIGHT REHABILITATION	100
2026	CROW CANYON RD (WB)	ALCOSTA BLVD	CAMINO RAMON	A	52	LIGHT REHABILITATION	100
2026	CROW CANYON RD (WB)	CAMINO RAMON	CROW CANYON PL	A	59	HEAVY MAINTENANCE	70
2026	CROW CANYON RD (WB)	SR VALLEY BLVD	BOLLINGER CYN RD	A	43	LIGHT REHABILITATION	100
2026	MAY CT	MAY WAY	END	R	66	LIGHT REHABILITATION	100
2026	NORTHLAND PL	MAY WAY	END	R	35	HEAVY REHABILITATION	100
2026	OMEGA RD	330 FT N/O DEERWOOD RD	FARIA PRESERVE PKWY	C	20	HEAVY REHABILITATION	100
2026	SAN BLAS PL	ESTERO DR	END	R	38	HEAVY REHABILITATION	100
2026	SAN RAMON VLY BLVD (NB)	PINE VALLEY RD	WESTSIDE DR	A	44	LIGHT REHABILITATION	100
2026	SAN RAMON VLY BLVD (NB)	WESTSIDE DR	MONTEVIDEO DR	A	47	LIGHT REHABILITATION	100
2026	SAN RAMON VLY BLVD (SB)	MONTEVIDEO DR	WESTSIDE DR	A	38	LIGHT REHABILITATION	100
2026	SAN RAMON VLY BLVD (SB)	WESTSIDE DR	PINE VALLEY RD	A	48	LIGHT REHABILITATION	100
2026	SOTA PL	ESTERO DR	END	R	42	HEAVY REHABILITATION	100
2027	ACORN CT	SEDGEFIELD AVE	END	R	68	LIGHT MAINTENANCE	77
2027	ADAMS PL	PINE VALLEY RD	END	R	72	LIGHT MAINTENANCE	81
2027	ALDGATE WAY	SHERWOOD WAY	PAIGE WAY	R	74	LIGHT MAINTENANCE	83
2027	ALMOND CT	BROADMOOR DR	END	R	74	LIGHT MAINTENANCE	83
2027	ALVO CT	ENFIELD ST	END	R	73	LIGHT MAINTENANCE	82
2027	AMHERST CT	NORTHLAND AVE	END	R	77	LIGHT MAINTENANCE	85
2027	ARDEN CT	WYCLIFFE LN	END	R	74	LIGHT MAINTENANCE	82
2027	ARLINGTON WAY	E BRANCH PKWY	THURLOW WAY	R	78	LIGHT MAINTENANCE	86
2027	ARLINGTON WAY	THURLOW WAY	PERCY LN	R	77	LIGHT MAINTENANCE	85
2027	ARVADA CT	CHEYENNE AVE	END	R	77	LIGHT MAINTENANCE	85
2027	ASHBY WAY	N END	HILLSBORO AVE	R	74	LIGHT MAINTENANCE	82
2027	AVOCADO CT	ASHBY WAY	END	R	76	LIGHT MAINTENANCE	84
2027	BAKER WAY	MORNINGTON LN	SHERWOOD WAY	R	76	LIGHT MAINTENANCE	85
2027	BANBURY DR	WYCLIFFE LN	CHANCERY WAY	R	68	LIGHT MAINTENANCE	77
2027	BOXFORD PL	PINE VALLEY RD	END	R	77	LIGHT MAINTENANCE	86
2027	BUTTE AVE	SEDGEFIELD AVE	BROADMOOR DR	R	74	LIGHT MAINTENANCE	83
2027	CABRILLO AVE	BROADMOOR DR	SEDGEFIELD AVE	R	76	HEAVY MAINTENANCE	84
2027	CARRINGTON CT	BAKER WAY	END	R	74	LIGHT MAINTENANCE	83
2027	CASHEW CT	BROADMOOR DR	END	R	79	LIGHT MAINTENANCE	87
2027	CASPER PL	BUTTE AVE	END	R	77	LIGHT MAINTENANCE	85
2027	CENTURY OAKS CT	WESTSIDE DR	END	R	72	HEAVY MAINTENANCE	81
2027	CHANCERY WAY	WYCLIFFE LN	E BRANCH PKWY	R	73	LIGHT MAINTENANCE	82
2027	CHAPPARAL CT	WESTSIDE DR	END	R	65	HEAVY MAINTENANCE	75
2027	CHESTNUT CT	BROADMOOR DR	END	R	80	LIGHT MAINTENANCE	87
2027	CHEYENNE AVE	BROADMOOR DR	ASHBY WAY	R	73	LIGHT MAINTENANCE	81
2027	CLIFTON CT	BAKER WAY	END	R	73	LIGHT MAINTENANCE	82
2027	COMSTOCK CT	CENTENNIAL WAY	END	R	69	LIGHT MAINTENANCE	78
2027	CENTENNIAL WAY	WESTSIDE DR (W)	WESTSIDE DR (E)	R	73	LIGHT MAINTENANCE	82
2027	CODY CT	OAK CREEK DR	END	R	75	LIGHT MAINTENANCE	84
2027	CROW CANYON PL	FOSTORIA WAY	CROW CANYON RD	C	60	HEAVY MAINTENANCE	70
2027	CROW CANYON RD (EB)	SR VALLEY BLVD	680 OC BRIDGE (W)	A	70	LIGHT MAINTENANCE	79
2027	CROW CANYON RD (EB)	680 OC BRIDGE (E)	CROW CANYON PL	A	67	LIGHT MAINTENANCE	76
2027	CROW CANYON RD (WB)	CROW CANYON PL	680 OC BRIDGE (E)	A	57	HEAVY MAINTENANCE	68
2027	CROW CANYON RD (WB)	680 OC BRIDGE (W)	SR VALLEY BLVD	A	63	LIGHT MAINTENANCE	73
2027	DAYTON CT	CHEYENNE AVE	END	R	76	LIGHT MAINTENANCE	84
2027	DEVON CT	NORTHLAND AVE	END	R	75	LIGHT MAINTENANCE	83
2027	DIAMOND RANCH CT	HENRY RANCH DR	END	R	82	LIGHT MAINTENANCE	89
2027	EAST BRANCH PKWY (EB)	BOLLINGER CYN RD	CHANCERY WAY	A	68	HEAVY MAINTENANCE	77
2027	EAST BRANCH PKWY (EB)	CHANCERY WAY	SHERWOOD WAY	A	64	HEAVY MAINTENANCE	74

Red = Low PCI Street (Prior to estimated treatment)

City of San Ramon  
5-Year Pavement Management Plan  
FY 2026/2027 - 2030/2031  
(Sorted by Construction Year, and Alphabetical Order)

YEAR	ROAD NAME	BEGIN LOCATION	END LOCATION	FC	PCI PRIOR	STREETSAVER ESTIMATED TREATMENT	PCI AFTER
2027	EAST BRANCH PKWY (EB)	SHERWOOD WAY	ENFIELD ST	A	68	HEAVY MAINTENANCE	77
2027	EAST BRANCH PKWY (EB)	ENFIELD ST	ARLINGTON WAY	A	71	HEAVY MAINTENANCE	80
2027	EAST BRANCH PKWY (EB)	ARLINGTON WAY	WINDEMERE PKWY	A	63	HEAVY MAINTENANCE	73
2027	EAST BRANCH PKWY (WB)	WINDEMERE PKWY	ARLINGTON WAY	A	74	HEAVY MAINTENANCE	83
2027	EAST BRANCH PKWY (WB)	ARLINGTON WAY	ENFIELD ST	A	70	HEAVY MAINTENANCE	79
2027	EAST BRANCH PKWY (WB)	ENFIELD ST	SHERWOOD WAY	A	72	HEAVY MAINTENANCE	81
2027	EAST BRANCH PKWY (WB)	SHERWOOD WAY	CHANCERY WAY	A	68	HEAVY MAINTENANCE	78
2027	EAST BRANCH PKWY (WB)	CHANCERY WAY	BOLLINGER CYN RD	A	69	HEAVY MAINTENANCE	78
2027	EDEN PL	LARAMIE AVE	END	R	76	LIGHT MAINTENANCE	84
2027	EL MOLINO PL	DAVONA DR	END	R	75	LIGHT MAINTENANCE	83
2027	EMBLETON LN	MORNINGTON LN	VERNON WAY	R	80	LIGHT MAINTENANCE	87
2027	ENFIELD ST	E BRANCH PKWY	THURLOW WAY	R	65	HEAVY MAINTENANCE	75
2027	ENFIELD ST	THURLOW WAY	PAIGE WAY	R	69	LIGHT MAINTENANCE	78
2027	ETHAN CT	DAVONA DR	END	R	62	LIGHT REHABILITATION	100
2027	ETNA CT	DAVONA DR	END	R	79	LIGHT MAINTENANCE	87
2027	FENWICK WAY	ENFIELD ST	ARLINGTON WAY	R	77	LIGHT MAINTENANCE	85
2027	FILBERT CT	SEDGEFIELD AVE	END	R	79	LIGHT MAINTENANCE	87
2027	FOUR OAKS HOLLOW	WESTSIDE DR	W END	R	67	HEAVY MAINTENANCE	76
2027	FARRINGDON WY	ENFIELD ST	LAMBETH WAY	R	72	LIGHT MAINTENANCE	81
2027	GOSHEN CT	E END	W END	R	69	LIGHT MAINTENANCE	78
2027	GOSHEN PL	GOSHEN CT	PINE VALLEY RD	R	70	LIGHT MAINTENANCE	79
2027	HALIFAX WAY	ENFIELD ST	HOSKINS LN	R	76	LIGHT MAINTENANCE	84
2027	HARLOW LN	MORNINGTON LN	BAKER WAY	R	71	LIGHT MAINTENANCE	80
2027	HAVEN PL	DAVONA DR	END	R	73	LIGHT MAINTENANCE	82
2027	HAZELNUT CT	ASHBY WAY	END	R	72	LIGHT MAINTENANCE	81
2027	HENRY RANCH DR	WINDING CREEK WAY	W END	R	81	LIGHT MAINTENANCE	88
2027	HILLSBORO AVE	ASHBY WAY	W END	R	77	LIGHT MAINTENANCE	85
2027	HILLSBORO AVE	BROADMOOR DR	ASHBY WAY	R	75	LIGHT MAINTENANCE	83
2027	HILLSBORO AVE	BROADMOOR DR	E END	R	64	HEAVY MAINTENANCE	74
2027	HOSKINS LN	ENFIELD ST	HALIFAX WAY	R	71	LIGHT MAINTENANCE	80
2027	INGLETON WAY	WYCLIFFE LN	E BRANCH PKWY	R	72	LIGHT MAINTENANCE	81
2027	INVERNESS CT	INVERNESS ST	END	R	44	HEAVY MAINTENANCE	60
2027	INVERNESS ST	BROADMOOR DR	SEDGEFIELD AVE	R	37	HEAVY REHABILITATION	100
2027	KEARNY WAY	WINDEMERE PKWY	KEATS LN	R	64	HEAVY MAINTENANCE	74
2027	KEATS LN	ENFIELD ST	HALIFAX WAY	R	70	LIGHT MAINTENANCE	79
2027	LAGUNA PL	PINE VALLEY RD	END	R	71	LIGHT MAINTENANCE	80
2027	LAMBETH WAY	THURLOW WAY	FENWICK WAY	R	74	LIGHT MAINTENANCE	83
2027	LANDER PL	BUTTE AVE	END	R	74	LIGHT MAINTENANCE	82
2027	LARAMIE AVE	DAVONA DR	ASHBY WAY	R	72	LIGHT MAINTENANCE	81
2027	LIPTON PL	LARAMIE AVE	END	R	81	LIGHT MAINTENANCE	89
2027	LONE TREE CT	LONE TREE LN	SR VALLEY BLVD	R	68	LIGHT MAINTENANCE	78
2027	LYCHEE CT	AVOCADO CT	END	R	72	LIGHT MAINTENANCE	81
2027	MAJESTIC OAK CT	WESTSIDE DR	END	R	76	LIGHT MAINTENANCE	84
2027	MELBOURNE WAY	SHERWOOD WAY	MORNINGTON LN	R	76	LIGHT MAINTENANCE	84
2027	MILLS PL	LARAMIE AVE	END	R	79	LIGHT MAINTENANCE	87
2027	MILTON CT	WYCLIFFE LN	END	R	67	LIGHT MAINTENANCE	76
2027	MORNINGTON LN	SHERWOOD WAY	HARLOW LN	R	75	LIGHT MAINTENANCE	84
2027	MORNINGTON LN	HARLOW LN	BAKER WAY	R	76	LIGHT MAINTENANCE	84
2027	MORNINGTON CT	BAKER WAY	END	R	78	LIGHT MAINTENANCE	86
2027	NORTHLAND PL	DAVONA DR	MAY WAY	R	63	HEAVY MAINTENANCE	74
2027	NORWICH CT	INVERNESS ST	END	R	44	HEAVY MAINTENANCE	60
2027	OAK CREEK DR	DAVONA DR	TAREYTON AVE	R	75	LIGHT MAINTENANCE	84
2027	OMEGA RD	DEERWOOD RD	330 FT N/O DEERWOOD RD	C	61	HEAVY MAINTENANCE	71
2027	PAIGE CT	KEARNY WAY	END	R	76	LIGHT MAINTENANCE	84
2027	PAIGE WAY	ENFIELD ST	KEARNY WAY	R	72	LIGHT MAINTENANCE	81

Red = Low PCI Street (Prior to estimated treatment)

City of San Ramon  
5-Year Pavement Management Plan  
FY 2026/2027 - 2030/2031  
(Sorted by Construction Year, and Alphabetical Order)

YEAR	ROAD NAME	BEGIN LOCATION	END LOCATION	FC	PCI PRIOR	STREETSAVER ESTIMATED TREATMENT	PCI AFTER
2027	PECAN CT	DAVONA DR	END	R	78	LIGHT MAINTENANCE	86
2027	PERCY LN	ENFIELD ST	KEATS LN	R	67	LIGHT MAINTENANCE	77
2027	PINEHURST PL	PINE VALLEY RD	END	R	76	LIGHT MAINTENANCE	84
2027	PINENUT CT	BROADMOOR DR	END	R	72	LIGHT MAINTENANCE	81
2027	PINE VALLEY PL	WESTSIDE DR	END	R	66	LIGHT MAINTENANCE	76
2027	QUIMBY CT	CHANCERY WAY	END	R	73	LIGHT MAINTENANCE	82
2027	RIVERTON PL	BUTTE AVE	END	R	73	LIGHT MAINTENANCE	82
2027	SALISBURY WAY	MORNINGTON LN	MELBOURNE WAY	R	77	LIGHT MAINTENANCE	85
2027	SAN RAMON VLY BLVD (NB)	MONTEVIDEO DR	ELLINGSON WAY	A	69	HEAVY MAINTENANCE	78
2027	SAN RAMON VLY BLVD (NB)	ELLINGSON WAY	BARNWOOD DR	A	71	HEAVY MAINTENANCE	80
2027	SAN RAMON VLY BLVD (NB)	BARNWOOD DR	BOLLINGER CYN RD	A	76	LIGHT MAINTENANCE	84
2027	SAN RAMON VLY BLVD (SB)	BOLLINGER CYN RD	BARNWOOD DR	A	76	LIGHT MAINTENANCE	84
2027	SAN RAMON VLY BLVD (SB)	BARNWOOD DR	MONTEVIDEO DR	A	78	LIGHT MAINTENANCE	86
2027	SEDGEFIELD AVE	CABRILLO AVE	BROADMOOR DR	R	72	LIGHT MAINTENANCE	81
2027	SEDGEFIELD AVE	BROADMOOR DR	INVERNESS ST	R	39	HEAVY REHABILITATION	100
2027	SEDGEFIELD AVE	INVERNESS ST	END	R	44	HEAVY MAINTENANCE	60
2027	SHERWOOD WAY	WINDEMERE PKWY	MORNINGTON LN	C	63	HEAVY MAINTENANCE	73
2027	SHERWOOD WAY	MORNINGTON LN	E BRANCH PKWY	C	69	HEAVY MAINTENANCE	79
2027	SPORTS PARK	BAKER WAY	E BRANCH PKWY	O	70	LIGHT MAINTENANCE	79
2027	SPORTS PARK	MELBOURNE WAY DWY	BAKER WAY DWY	O	69	LIGHT MAINTENANCE	78
2027	STRATFORD DR	PINE VALLEY RD	TAREYTON AVE	R	75	LIGHT MAINTENANCE	84
2027	SUNNYBROOK PL	YOSEMITE AVE	END	R	79	LIGHT MAINTENANCE	86
2027	TAREYTON AVE	PINE VALLEY RD	DAVONA DR	R	71	LIGHT MAINTENANCE	80
2027	TAREYTON CT	TAREYTON AVE	END	R	80	LIGHT MAINTENANCE	87
2027	TASSAJARA RIDGE STAGING	WINDEMERE PKWY	W END OF LOT	O	61	LIGHT MAINTENANCE	72
2027	TERRACED HILLS WAY	LA COUNT LN	LONE TREE CT	R	82	LIGHT MAINTENANCE	89
2027	THURLOW WAY	ENFIELD ST	ARLINGTON WAY	R	71	LIGHT MAINTENANCE	80
2027	TOM CT	PINE VALLEY RD	END	R	68	LIGHT MAINTENANCE	77
2027	VERNON WAY	MELBOURNE WAY	MORNINGTON LN	R	75	LIGHT MAINTENANCE	84
2027	WELFORD RANCH CT	WESTSIDE DR	N END (CDS)	R	78	LIGHT MAINTENANCE	86
2027	WESTSIDE CT	WESTSIDE DR	END	R	64	LIGHT MAINTENANCE	74
2027	WESTSIDE PL	WESTSIDE DR	END	R	80	LIGHT MAINTENANCE	88
2027	WESTWOOD AVE	DAVONA DR	END	R	77	LIGHT MAINTENANCE	85
2027	WINDING CREEK WAY	WESTSIDE DR	CITY LIMIT	R	81	LIGHT MAINTENANCE	88
2027	WINDMILL CT	WESTSIDE DR	N END (CDS)	R	76	LIGHT MAINTENANCE	84
2027	WINN CT	STRATFORD DR	END	R	69	LIGHT MAINTENANCE	78
2027	WINTHROP AVE	DAVONA DR	W END	R	70	LIGHT MAINTENANCE	79
2027	WINTHROP AVE	E END	DAVONA DR	R	79	LIGHT MAINTENANCE	87
2027	WESTSIDE DR	MAJESTIC OAK CT	WINDING CREEK WAY	C	75	LIGHT MAINTENANCE	83
2027	WESTSIDE DR	WINDING CREEK WAY	DUBERSTEIN DR	C	77	LIGHT MAINTENANCE	85
2027	WESTSIDE DR	DUBERSTEIN DR	WOODBOROUGH WAY	C	74	LIGHT MAINTENANCE	82
2027	WESTSIDE DR	WOODBOROUGH WAY	SR VALLEY BLVD	C	70	LIGHT MAINTENANCE	79
2027	WYCLIFFE CT	INGLETON WAY	END	R	75	LIGHT MAINTENANCE	83
2027	WYCLIFFE LN	INGLETON WAY	CHANCERY WAY	R	70	LIGHT MAINTENANCE	79
2027	YALE CT	NORTHLAND PL	END	R	74	LIGHT MAINTENANCE	82
2027	YOSEMITE AVE	TAREYTON AVE	DAVONA DR	R	80	LIGHT MAINTENANCE	87
2028	ALCOSTA BLVD (NB)	VERACRUZ DR	CANYON HILLS RD	A	42	LIGHT REHABILITATION	100
2028	ALCOSTA BLVD (NB)	CANYON HILLS RD	MARKET PL	A	44	LIGHT REHABILITATION	100
2028	ALCOSTA BLVD (NB)	MARKET PL	BOLLINGER CYN RD	A	50	LIGHT REHABILITATION	100
2028	ALCOSTA BLVD (SB)	BOLLINGER CYN RD	MARKET PL	A	47	LIGHT REHABILITATION	100
2028	ALCOSTA BLVD (WB)	KIMBALL AVE	SR VALLEY BLVD	A	50	LIGHT REHABILITATION	100
2028	BOLLINGER CYN RD (WB)	ALBION RD	N MONARCH RD	A	47	LIGHT REHABILITATION	100
2028	NEWPORT AVE	BROADMOOR DR	RUTLAND CT	R	34	LIGHT REHABILITATION	100
2028	PINE VALLEY RD	BROADMOOR DR	DAVONA DR	C	55	LIGHT REHABILITATION	100
2028	PINE VALLEY RD	DAVONA DR	TAREYTON AVE	C	53	LIGHT REHABILITATION	100

Red = Low PCI Street (Prior to estimated treatment)

City of San Ramon  
5-Year Pavement Management Plan  
FY 2026/2027 - 2030/2031  
(Sorted by Construction Year, and Alphabetical Order)

YEAR	ROAD NAME	BEGIN LOCATION	END LOCATION	FC	PCI PRIOR	STREETSAVER ESTIMATED TREATMENT	PCI AFTER
2028	PINE VALLEY RD	TAREYTON AVE	SR VALLEY BLVD	C	50	LIGHT REHABILITATION	100
2028	PINE VALLEY RD	SR VALLEY BLVD	WESTSIDE DRIVE	C	31	LIGHT REHABILITATION	100
2028	SAN RAMON VLY BLVD (NB)	680 RAMPS	PINE VALLEY RD	A	46	LIGHT REHABILITATION	100
2028	SAN RAMON VLY BLVD (NB)	BOLLINGER CYN RD	TALAVERA DR	A	46	LIGHT REHABILITATION	100
2028	SAN RAMON VLY BLVD (NB)	TALAVERA DR	NORRIS CANYON RD	A	40	LIGHT REHABILITATION	100
2028	SAN RAMON VLY BLVD (NB)	CROW CANYON RD	FOSTORIA WAY	A	48	LIGHT REHABILITATION	100
2028	SAN RAMON VLY BLVD (NB)	FOSTORIA WAY	CITY LIMIT	A	48	LIGHT REHABILITATION	100
2028	SAN RAMON VLY BLVD (SB)	CITY LIMIT	DEERWOOD RD	A	55	LIGHT REHABILITATION	100
2028	SAN RAMON VLY BLVD (SB)	DEERWOOD RD	CROW CANYON RD	A	49	LIGHT REHABILITATION	100
2028	SAN RAMON VLY BLVD (SB)	NORRIS CANYON RD	TALAVERA DR	A	52	LIGHT REHABILITATION	100
2028	SAN RAMON VLY BLVD (SB)	TALAVERA DR	BOLLINGER CYN RD	A	42	LIGHT REHABILITATION	100
2028	SAN RAMON VLY BLVD (SB)	PINE VALLEY RD	680 RAMP	A	48	LIGHT REHABILITATION	100
2029	AMES WAY	WINDEMERE PKWY	EMERSON LN	R	59	HEAVY MAINTENANCE	70
2029	ANDROS DR	TAHITI DR	END	R	62	HEAVY MAINTENANCE	72
2029	BAHAMA CT	TAHITI DR	END	R	73	LIGHT MAINTENANCE	81
2029	BALI CT	TAHITI DR	END	R	74	LIGHT MAINTENANCE	83
2029	BALTUSROL CT	BALTUSROL PL	END	R	65	LIGHT MAINTENANCE	75
2029	BALTUSROL PL	BROADMOOR DR	END	R	66	LIGHT MAINTENANCE	76
2029	BARBADOS DR	CROW CANYON RD	END	R	68	LIGHT MAINTENANCE	77
2029	BELLE MEADE DR	BROADMOOR DR (N)	BROADMOOR DR (S)	R	53	HEAVY MAINTENANCE	66
2029	BELLE MEADE PL	BELLE MEADE DR	END	R	38	LIGHT REHABILITATION	100
2029	BERMUDA CT	TAHITI DR	END	R	77	LIGHT MAINTENANCE	86
2029	BALMORAL CT	KENNARD LN	END	R	76	LIGHT MAINTENANCE	84
2029	BALMORAL WAY	BENNINGTON WAY	EMERSON LN	R	61	LIGHT MAINTENANCE	72
2029	BALMORAL WAY	EMERSON LN	HOLBORN WAY	R	71	LIGHT MAINTENANCE	80
2029	BALMORAL WAY	HOLBORN WAY	PENZANCE WAY	R	76	LIGHT MAINTENANCE	84
2029	BALMORAL WAY	PENZANCE WAY	KENNARD RD	R	76	LIGHT MAINTENANCE	84
2029	BLUE FOX WAY	DAVONA DR	NORTHLAND AVE	R	51	HEAVY MAINTENANCE	64
2029	BENNINGTON WAY	MURDOCK WAY	KINGS RD	R	67	LIGHT MAINTENANCE	77
2029	BROADMOOR DR	DUNBARTON CIR (N)	ASCOT DR (S)	C	49	LIGHT REHABILITATION	100
2029	BROADMOOR DR	ASCOT DR	MONTEVIDEO DR	C	65	LIGHT REHABILITATION	100
2029	BROADMOOR DR	MONTEVIDEO DR	ST DENIS DR	C	57	HEAVY MAINTENANCE	68
2029	BROADMOOR DR	ST DENIS DR	MILLBRIDGE DR	C	62	HEAVY MAINTENANCE	73
2029	BROADMOOR DR	MILLBRIDGE DR	WESTCHESTER DR	C	55	HEAVY MAINTENANCE	67
2029	BROADMOOR DR	WESTCHESTER DR	SPRINGDALE LN	C	60	HEAVY MAINTENANCE	71
2029	BROADMOOR DR	SPRINGDALE LN	PINE VALLEY RD	C	56	LIGHT REHABILITATION	100
2029	BROADMOOR DR	PINE VALLEY RD	SEDFIELD AVE	C	66	HEAVY MAINTENANCE	75
2029	BROADMOOR DR	SEDFIELD AVE	BELLE MEADE DR (N)	C	71	HEAVY MAINTENANCE	80
2029	BROADMOOR DR	BELLE MEADE DR (N)	BELLE MEADE DR (S)	C	62	HEAVY MAINTENANCE	72
2029	BROADMOOR DR	BELLE MEADE DR (S)	ALCOSTA BLVD	C	51	HEAVY MAINTENANCE	64
2029	BRUNSWICK CT	ST DENIS DR	END	R	34	HEAVY MAINTENANCE	55
2029	CALAIS DR	COLL CT	MENNET WAY	R	26	HEAVY REHABILITATION	100
2029	CHILENSE CT	HELICON CT	END	R	26	HEAVY MAINTENANCE	52
2029	DAWES CT	KINGS RD	END	R	62	LIGHT MAINTENANCE	72
2029	EMERSON LN	KEARNY WAY	MURDOCK WAY	R	66	LIGHT MAINTENANCE	76
2029	EMERSON LN	MURDOCK WAY	HOLBORN WAY	R	64	LIGHT MAINTENANCE	74
2029	EMERSON LN	HOLBORN WAY	BALMORAL WAY	R	71	LIGHT MAINTENANCE	80
2029	HAITI CT	JAVA DR	END	R	51	HEAVY MAINTENANCE	64
2029	HOLBORN WAY	WINDEMERE PKWY	KENNARD LN	R	65	LIGHT MAINTENANCE	75
2029	JAVA DR	TAHITI DR	END	R	61	HEAVY MAINTENANCE	71
2029	KAUAI CT	LANAI DR	END	R	51	HEAVY MAINTENANCE	64
2029	KEARNY WAY	WINDEMERE PKWY	MURDOCK WAY	R	63	LIGHT MAINTENANCE	73
2029	KINGS RD	EMERSON WAY	BENNINGTON WAY	R	59	HEAVY MAINTENANCE	70
2029	KENNARD LN	KINGS RD	HOLBORN WAY	R	73	LIGHT MAINTENANCE	81
2029	KENNARD LN	HOLBORN WAY	BALMORAL WAY	R	76	LIGHT MAINTENANCE	84

Red = Low PCI Street (Prior to estimated treatment)

City of San Ramon  
5-Year Pavement Management Plan  
FY 2026/2027 - 2030/2031  
(Sorted by Construction Year, and Alphabetical Order)

YEAR	ROAD NAME	BEGIN LOCATION	END LOCATION	FC	PCI PRIOR	STREETSAYER ESTIMATED TREATMENT	PCI AFTER
2029	LANAI DR	TAHITI DR	END	R	61	HEAVY MAINTENANCE	71
2029	LUDLOW PL	MILLBRIDGE DR	END	R	40	HEAVY MAINTENANCE	58
2029	LYSANDER CT	THAYER LN	END	R	59	HEAVY MAINTENANCE	70
2029	LYSANDER WY	THAYER CT	LYSANDER CT	R	58	HEAVY MAINTENANCE	69
2029	MAUI CT	TAHITI DR	END	R	76	LIGHT MAINTENANCE	84
2029	MEDINAH CT	BELLE MEADE DR	END	R	53	LIGHT REHABILITATION	100
2029	METAIRE CT	BELLE MEADE DR	END	R	56	HEAVY MAINTENANCE	68
2029	METAIRE PL	BELLE MEADE DR	END	R	47	LIGHT REHABILITATION	100
2029	MILBURN CT	BELLE MEADE DR	END	R	74	LIGHT MAINTENANCE	82
2029	MILLBRIDGE DR	BROADMOOR DR	MILO WAY	R	40	LIGHT REHABILITATION	100
2029	MILO WAY	DAVONA DR	BRUNSWICK WAY	R	34	LIGHT REHABILITATION	100
2029	MOLOKAI CT	BARBADOS DR	END	R	76	LIGHT MAINTENANCE	85
2029	MURDOCK WAY	KEARNY WAY	EMERSON LN	R	59	HEAVY MAINTENANCE	70
2029	MURDOCK WAY	EMERSON LN	BENNINGTON WAY	R	67	LIGHT MAINTENANCE	77
2029	NEWPORT AVE	RUTLAND CT	BRUNSWICK WAY	R	42	HEAVY MAINTENANCE	59
2029	OAHU CT	JAVA DR	END	R	51	HEAVY MAINTENANCE	64
2029	OLIVIA CT	BALMORAL WAY	END	R	63	LIGHT MAINTENANCE	73
2029	PENZANCE WAY	BALMORAL WAY	EMERSON LANE	R	74	LIGHT MAINTENANCE	82
2029	RAMON PL	BROADMOOR DR	END	R	67	LIGHT MAINTENANCE	77
2029	RUTLAND CT	NEWPORT AVE	END	R	51	HEAVY MAINTENANCE	64
2029	SAMOA CT	BARBADOS DR	END	R	76	LIGHT MAINTENANCE	85
2029	SAND POINT DR	BELLE MEADE DR	NORTHLAND AVE	R	55	HEAVY MAINTENANCE	67
2029	SPALDING CT	BENNINGTON WAY	END	R	61	LIGHT MAINTENANCE	72
2029	ST PIERRE CT	DAVONA DR	END	R	63	HEAVY MAINTENANCE	73
2029	THAYER CT	LYSANDER WY	END	R	64	LIGHT MAINTENANCE	74
2029	THAYER LN	LYSANDER CT	THAYER CT	R	60	HEAVY MAINTENANCE	71
2029	USTILAGO CT	USTILAGO DR	END	R	26	HEAVY MAINTENANCE	52
2029	WINSIDE LN	WINDEMERE PKWY	THAYER LN	R	59	HEAVY MAINTENANCE	70
2030	ALCOSTA BLVD (EB)	SR VALLEY BLVD	KIMBALL AVE	A	49	LIGHT REHABILITATION	100
2030	ALCOSTA BLVD (EB)	KIMBALL AVE	ELMWOOD DR	A	52	LIGHT REHABILITATION	100
2030	ALCOSTA BLVD (EB)	ELMWOOD DR	VILLAGE PKWY	A	51	LIGHT REHABILITATION	100
2030	ALCOSTA BLVD (EB)	VILLAGE PKWY	FIRCREST LN	A	51	LIGHT REHABILITATION	100
2030	BOLLINGER CYN RD (NB)	DOUGHERTY RD (S)	E BRANCH PKWY	A	52	LIGHT REHABILITATION	100
2030	BOLLINGER CYN RD (NB)	E BRANCH PKWY	ALBION RD	A	47	LIGHT REHABILITATION	100
2030	BOLLINGER CYN RD (SB)	E BRANCH PKWY	DOUGHERTY RD (S)	A	52	LIGHT REHABILITATION	100
2030	BOLLINGER CYN RD (WB)	ALCOSTA BLVD	CAMINO RAMON	A	52	LIGHT REHABILITATION	100
2031	ALISMA CT	S CHANTERELLA DR	END	R	69	HEAVY MAINTENANCE	78
2031	ARBOLES PL	EL DORADO DR	END	R	68	HEAVY MAINTENANCE	77
2031	ASPENWOOD CT	SWEETGALE DR	END	R	52	HEAVY MAINTENANCE	65
2031	BELINDA CT	CORRINNE ST	END	R	46	HEAVY MAINTENANCE	61
2031	BIGELOW PL	TAREYTON AVE	END	R	64	LIGHT MAINTENANCE	74
2031	BLACK CALLA CT	N CHANTERELLA DR	END	R	59	HEAVY MAINTENANCE	70
2031	BLUE FOX WAY	KENT PL	DAVONA DR	R	75	LIGHT MAINTENANCE	84
2031	BOLIVAR PL	EL DORADO DR	END	R	39	LIGHT REHABILITATION	100
2031	BRIAN CT	CORRINNE ST	END	R	48	LIGHT REHABILITATION	100
2031	BRIDGEPORT AVE	TAREYTON AVE	DAVONA DR	R	40	LIGHT REHABILITATION	100
2031	BROCKTON AVE	BLUE FOX WAY	INTERLACHEN AVE	R	72	LIGHT MAINTENANCE	81
2031	BROCKTON AVE	INTERLACHEN AVE	ALCOSTA BLVD	R	72	LIGHT MAINTENANCE	81
2031	CALAIS DR	WESTCHESTER DR	COLL CT	R	50	LIGHT REHABILITATION	100
2031	CALAIS DR	MENNET WAY	GORHAM PL	R	56	LIGHT REHABILITATION	100
2031	CALAIS DR	GORHAM PL	DAVONA DR	R	46	LIGHT REHABILITATION	100
2031	CANNA WAY	N CHANTERELLA DR	SORRELWOOD DR	R	66	HEAVY MAINTENANCE	76
2031	CARAWAY CT	SWEETGALE DR	END	R	48	HEAVY MAINTENANCE	62
2031	CASSANDRA PL	BROCKTON AVE	END	R	71	LIGHT MAINTENANCE	80
2031	COLL CT	CALAIS DR	END	R	52	LIGHT REHABILITATION	100

Red = Low PCI Street (Prior to estimated treatment)

City of San Ramon  
5-Year Pavement Management Plan  
FY 2026/2027 - 2030/2031  
(Sorted by Construction Year, and Alphabetical Order)

YEAR	ROAD NAME	BEGIN LOCATION	END LOCATION	FC	PCI PRIOR	STREETSAYER ESTIMATED TREATMENT	PCI AFTER
2031	COMMODORE CT	SWEETGALE DR	END	R	55	HEAVY MAINTENANCE	67
2031	CORRINNE CT	CORRINNE PL	END	R	50	HEAVY MAINTENANCE	63
2031	CORRINNE PL	DAVONA DR	END	R	44	HEAVY MAINTENANCE	60
2031	CORRINNE ST	DAVONA DR	BROCKTON AVE	R	50	HEAVY MAINTENANCE	64
2031	CRESTWOOD PL	SPRINGDALE LN	END	R	61	LIGHT REHABILITATION	100
2031	CYPRESS HAWK CT	LILAC RIDGE RD	END	R	60	HEAVY MAINTENANCE	71
2031	DANNY CT	SWEETGALE DR	END	R	51	HEAVY MAINTENANCE	64
2031	DEWBERRY DR	N CHANTERELLA DR	WATERCRESS PL	R	61	HEAVY MAINTENANCE	71
2031	DORSET CT	BROADMOOR DR	END	R	56	HEAVY MAINTENANCE	68
2031	DUKE WAY	CORRINNE PL	DAVONA DR	R	62	LIGHT MAINTENANCE	72
2031	DUXBURY CT	OAKHAM DR	END	R	67	LIGHT MAINTENANCE	76
2031	EL SUYO DR	ALCOSTA BLVD	MANGOS DR	R	34	LIGHT REHABILITATION	100
2031	FULHAM CT	TOBY RD	END	R	71	HEAVY MAINTENANCE	80
2031	HAMPTON CT	OAKHAM DR	END	R	58	HEAVY MAINTENANCE	69
2031	HELICON CT	ALISMA CT	END	R	70	HEAVY MAINTENANCE	79
2031	JADECREST CT	LILAC RIDGE RD	END	R	45	HEAVY MAINTENANCE	61
2031	JADECREST DR	LILAC RIDGE RD	JADECREST CT	R	53	HEAVY MAINTENANCE	66
2031	KENT PL	S END	KENT WAY	R	65	LIGHT MAINTENANCE	75
2031	KENT PL	KENT WAY	N END	R	41	HEAVY MAINTENANCE	58
2031	KINGSLEY PL	SPRINGDALE LN	END	R	63	LIGHT MAINTENANCE	73
2031	LEVANT CT	S CHANTERELLA DR	END	R	55	HEAVY MAINTENANCE	67
2031	LILAC RIDGE RD	SHORELINE DR	ROSINCRESS DR	R	60	HEAVY MAINTENANCE	71
2031	LILAC RIDGE RD	ROSINCRESS DR	SWEETGALE DR (S)	R	48	HEAVY MAINTENANCE	62
2031	LINFORD PL	SPRINGDALE LN	END	R	65	LIGHT MAINTENANCE	74
2031	MADDELIA PL	BROCKTON AVE	END	R	72	LIGHT MAINTENANCE	80
2031	MADORA PL	INTERLACHEN AVE	END	R	71	LIGHT MAINTENANCE	80
2031	MONTCLAIR PL	SPRINGDALE LN	END	R	69	LIGHT MAINTENANCE	78
2031	MONTEVIDEO DR	SR VALLEY BLVD	TAREYTON AVE	C	75	HEAVY MAINTENANCE	84
2031	MONTEVIDEO DR	TAREYTON AVE	BROADMOOR DR	C	59	HEAVY MAINTENANCE	70
2031	MONTEVIDEO DR	BROADMOOR DR	IRON HORSE TRAIL	C	52	LIGHT REHABILITATION	100
2031	MONTEVIDEO DR	IRON HORSE TRAIL	COLIMA AVE	C	57	LIGHT REHABILITATION	100
2031	MONTEVIDEO DR	COLIMA AVE	MEADOWOOD CIR	C	52	LIGHT REHABILITATION	100
2031	MONTEVIDEO DR	MEADOWOOD CIR	ALCOSTA BLVD	C	52	LIGHT REHABILITATION	100
2031	NORTH CHANTERELLA DR	BOLLINGER CYN RD	ROSINCRESS DR	R	50	HEAVY MAINTENANCE	64
2031	NORRIS CANYON RD (EB)	TWIN CREEKS DR	SR VALLEY BLVD	C	58	HEAVY MAINTENANCE	69
2031	NORRIS CANYON RD (EB)	SR VALLEY BLVD	680 OC BRIDGE (W)	C	58	HEAVY MAINTENANCE	69
2031	NORRIS CANYON RD (WB)	680 OC BRIDGE (W)	SR VALLEY BLVD	C	50	HEAVY MAINTENANCE	63
2031	NORRIS CANYON RD (WB)	SR VALLEY BLVD	TWIN CREEKS DR	C	50	HEAVY MAINTENANCE	64
2031	OAKHAM CT	TOBY RD	END	R	65	LIGHT MAINTENANCE	74
2031	OAKHAM DR	TOBY RD	MONTEVIDEO DR	R	53	HEAVY MAINTENANCE	66
2031	PARLIN PL	TAREYTON AVE	END	R	41	LIGHT REHABILITATION	100
2031	POWNAL AVE	TAREYTON AVE	DAVONA DR	R	59	LIGHT MAINTENANCE	70
2031	RANDOLPH PL	TAREYTON AVE	END	R	62	LIGHT MAINTENANCE	72
2031	RENADA PL	EL DORADO DR	END	R	56	HEAVY MAINTENANCE	67
2031	ROSINCRESS CT	ROSINCRESS DR	END	R	46	HEAVY MAINTENANCE	61
2031	ROSINCRESS DR	LILAC RIDGE RD	ROSSINCRESS CT	R	55	HEAVY MAINTENANCE	67
2031	ROSINCRESS DR	ROSINCRESS CT	N CHANTERELLA DR	R	45	LIGHT REHABILITATION	100
2031	SOUTH CHANTERELLA DR	BOLLINGER CYN RD	LEVANT CT	R	62	HEAVY MAINTENANCE	73
2031	SHORELINE DR	CROW CANYON RD	LILAC RIDGE RD	R	38	HEAVY MAINTENANCE	57
2031	SORRELWOOD CT	CANNA WAY	END	R	60	HEAVY MAINTENANCE	70
2031	SORRELWOOD DR	ROSINCRESS DR	CANNA WAY	R	48	HEAVY MAINTENANCE	62
2031	SPRINGDALE LN	BROADMOOR DR	DAVONA DR	R	64	LIGHT MAINTENANCE	74
2031	SPRINGDALE LN	DAVONA DR	TAREYTON AVE	R	68	LIGHT MAINTENANCE	77
2031	ST DENIS CT	ST DENIS DR	END	R	46	HEAVY MAINTENANCE	61
2031	ST DENIS DR	DAVONA DR	BROADMOOR DR	R	81	LIGHT MAINTENANCE	89

Red = Low PCI Street (Prior to estimated treatment)

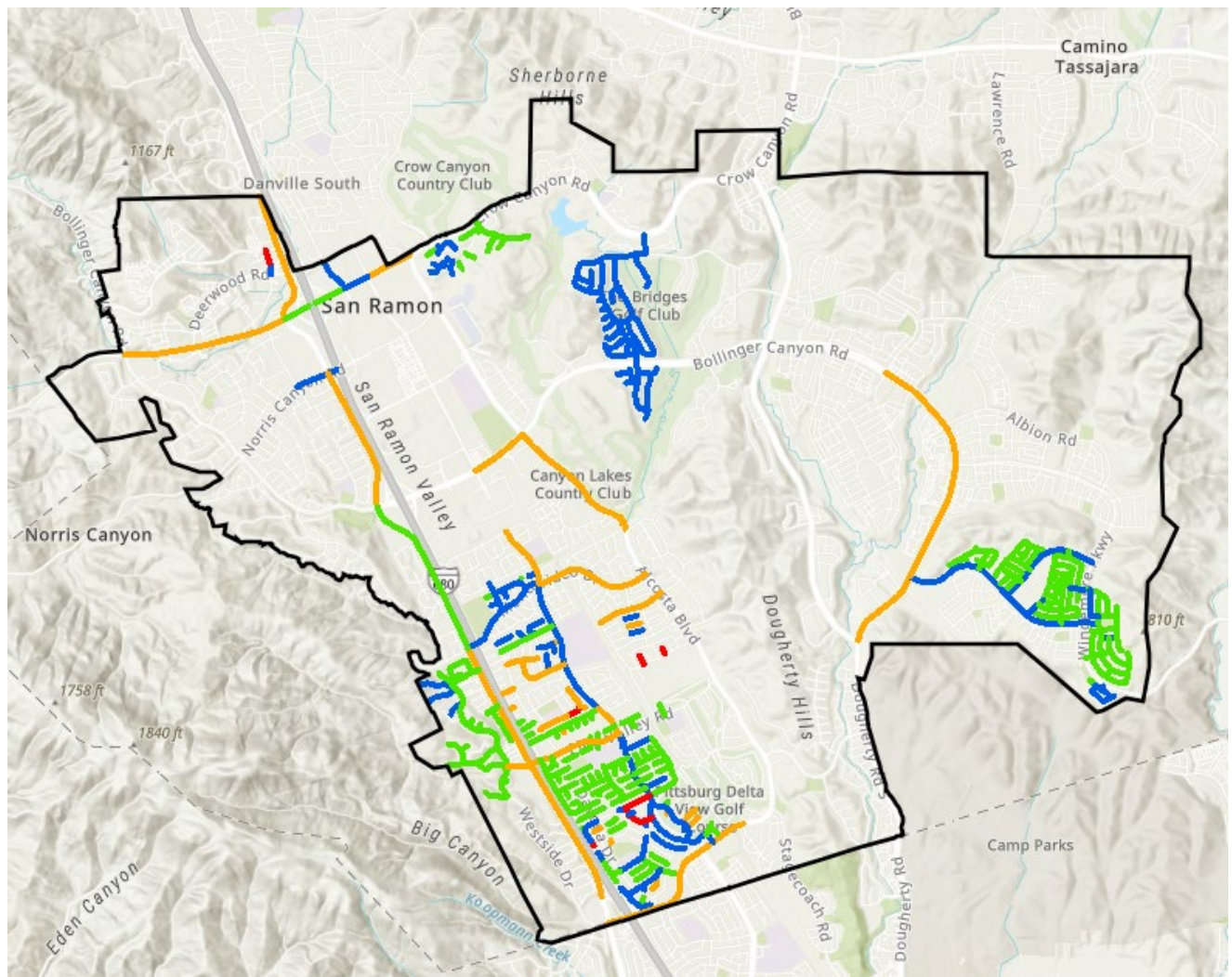
City of San Ramon  
 5-Year Pavement Management Plan  
 FY 2026/2027 - 2030/2031  
 (Sorted by Construction Year, and Alphabetical Order)

YEAR	ROAD NAME	BEGIN LOCATION	END LOCATION	FC	PCI PRIOR	STREETSAYER ESTIMATED TREATMENT	PCI AFTER
2031	SWEETGALE DR	LILAC RIDGE RD (N)	LILAC RIDGE RD (S)	R	40	HEAVY MAINTENANCE	58
2031	SWEETGALE DR	LILAC RIDGE RD (S)	N CHANTERELLA DR	R	60	HEAVY MAINTENANCE	70
2031	TOBY RD	MONTEVIDEO DR	ASCOT DR	R	50	HEAVY MAINTENANCE	64
2031	USTILAGO DR	S CHANTERELLA DR (S)	S CHANTERELLA DR (N)	R	59	HEAVY MAINTENANCE	70
2031	VENTURA PL	SPRINGDALE LN	END	R	72	LIGHT MAINTENANCE	80
2031	WATERCRESS PL	W END	E END	R	57	HEAVY MAINTENANCE	68
2031	WEATHERLY PL	SPRINGDALE LN	END	R	70	LIGHT MAINTENANCE	79
2031	WINEBERRY DR	N CHANTERELLA DR	WATERCRESS PL	R	57	HEAVY MAINTENANCE	69







# Proposed Treatments

Five Year Plan (FY 26/27 – 30/31) – All Project Periods

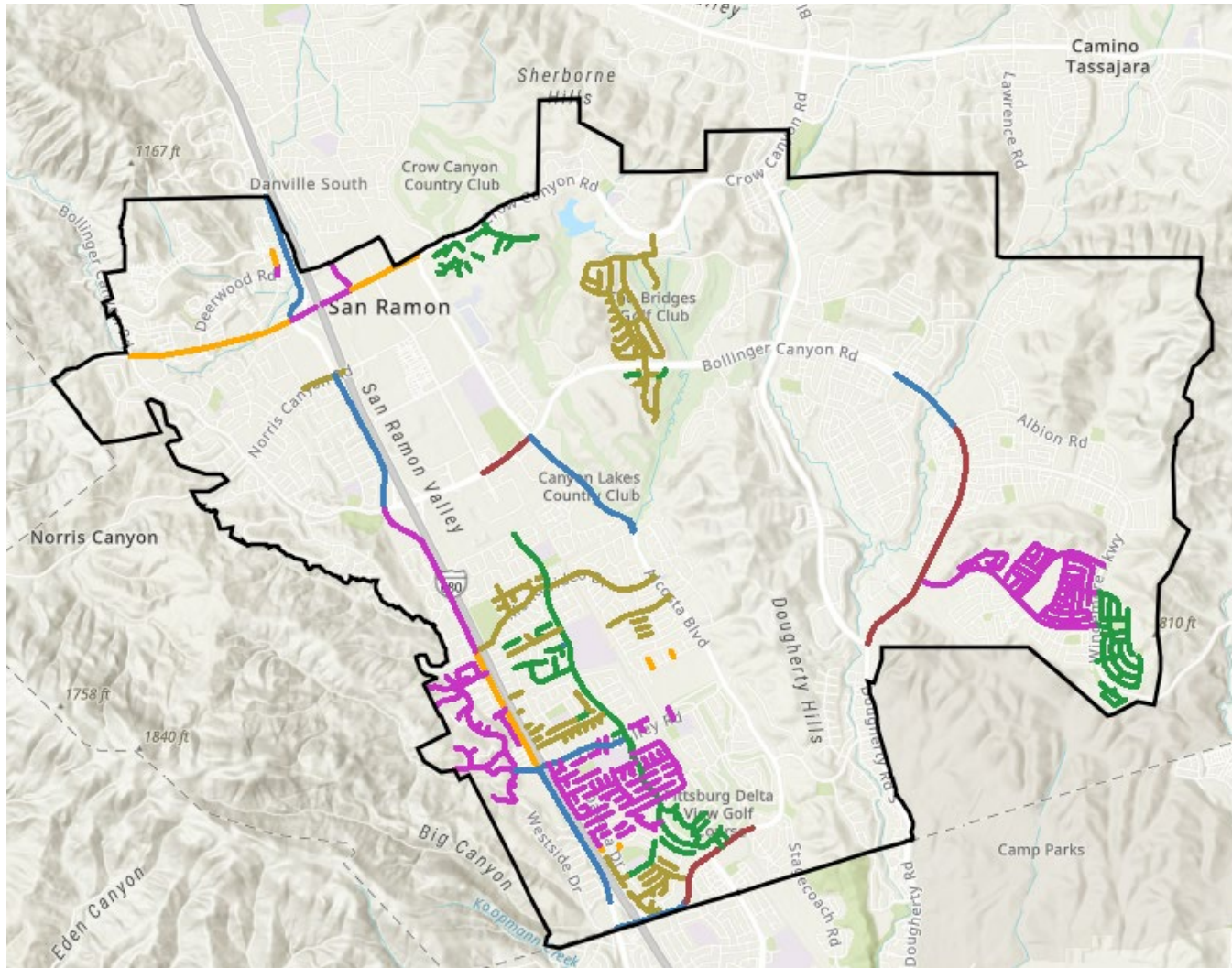


**LEGEND**

-  LIGHT MAINTENANCE
-  HEAVY MAINTENANCE
-  LIGHT REHABILITATION
-  HEAVY REHABILITATION

# Proposed Treatment Years

## Five Year Plan (FY 26/27 – 30/31) – All Project Periods

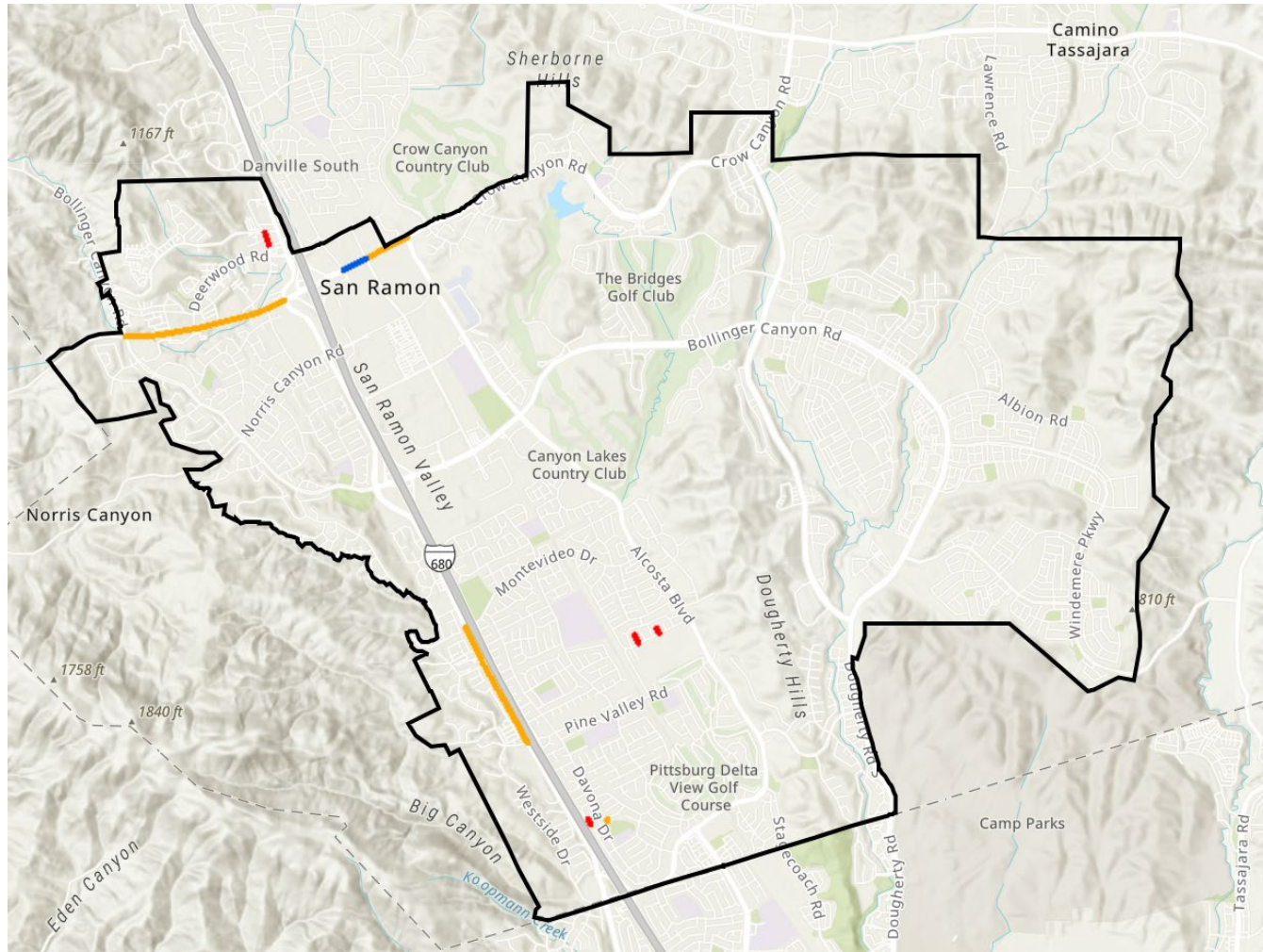


### LEGEND

- 2026
- 2027
- 2028
- 2029
- 2030
- 2031

# Proposed Treatment Year

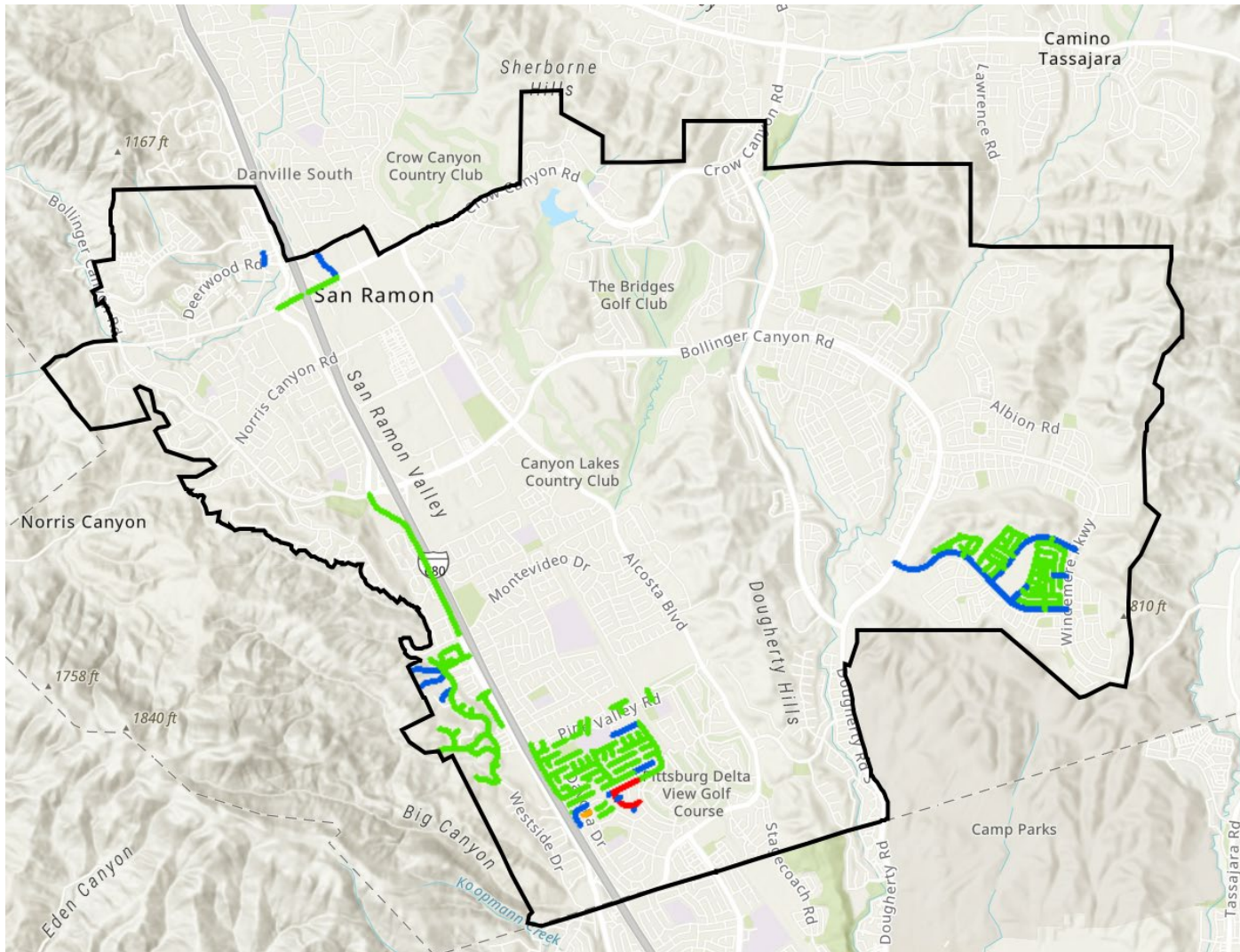
## Five Year Plan (FY 26/27 – 30/31) – 2026 Period



- LEGEND**
- LIGHT MAINTENANCE
  - HEAVY MAINTENANCE
  - LIGHT REHABILITATION
  - HEAVY REHABILITATION

# Proposed Treatment Year

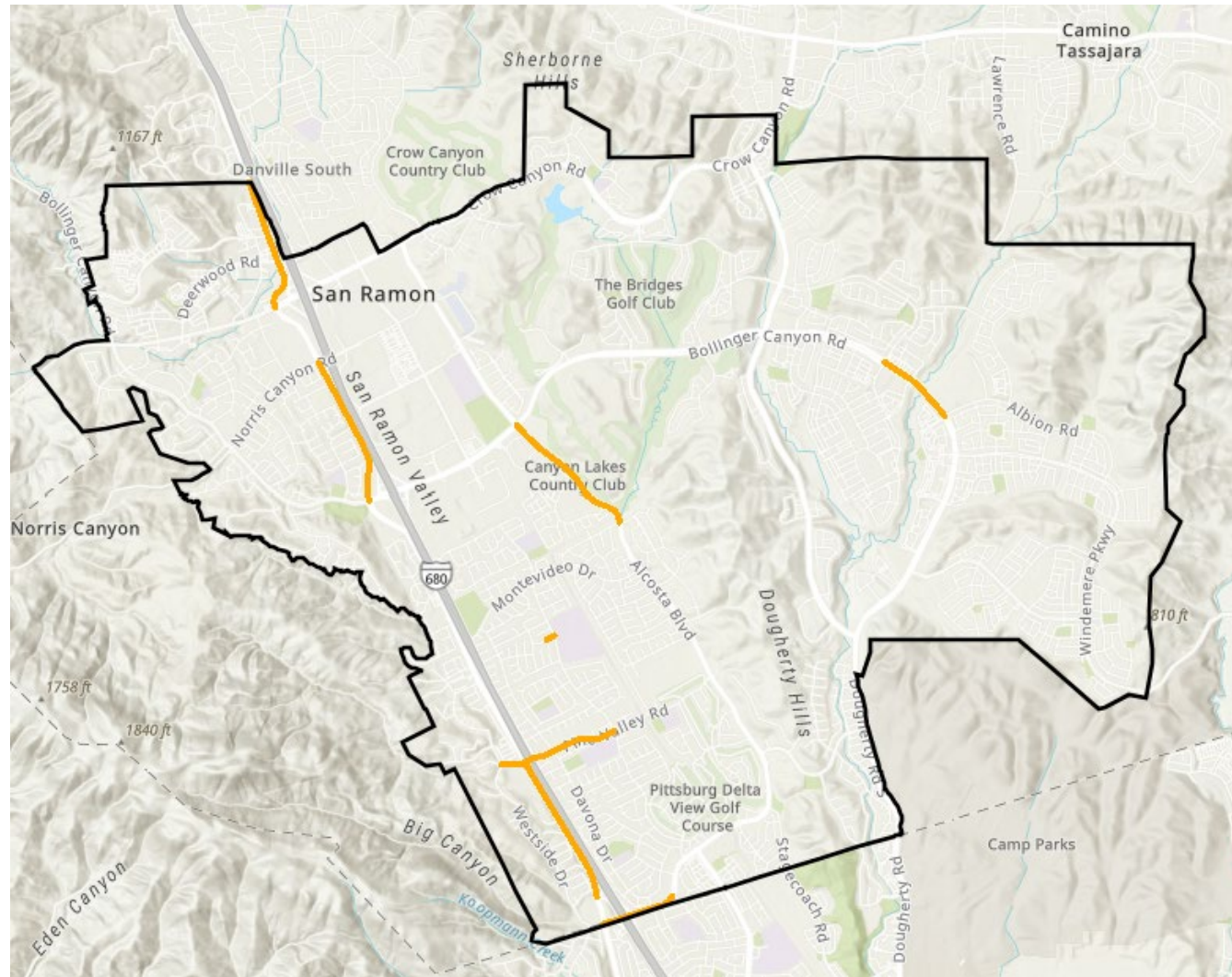
## Five Year Plan (FY 26/27 – 30/31) – 2027 Period



- LEGEND**
- █ LIGHT MAINTENANCE
  - █ HEAVY MAINTENANCE
  - █ LIGHT REHABILITATION
  - █ HEAVY REHABILITATION

# Proposed Treatment Year

## Five Year Plan (FY 26/27 – 30/31) – 2028 Period

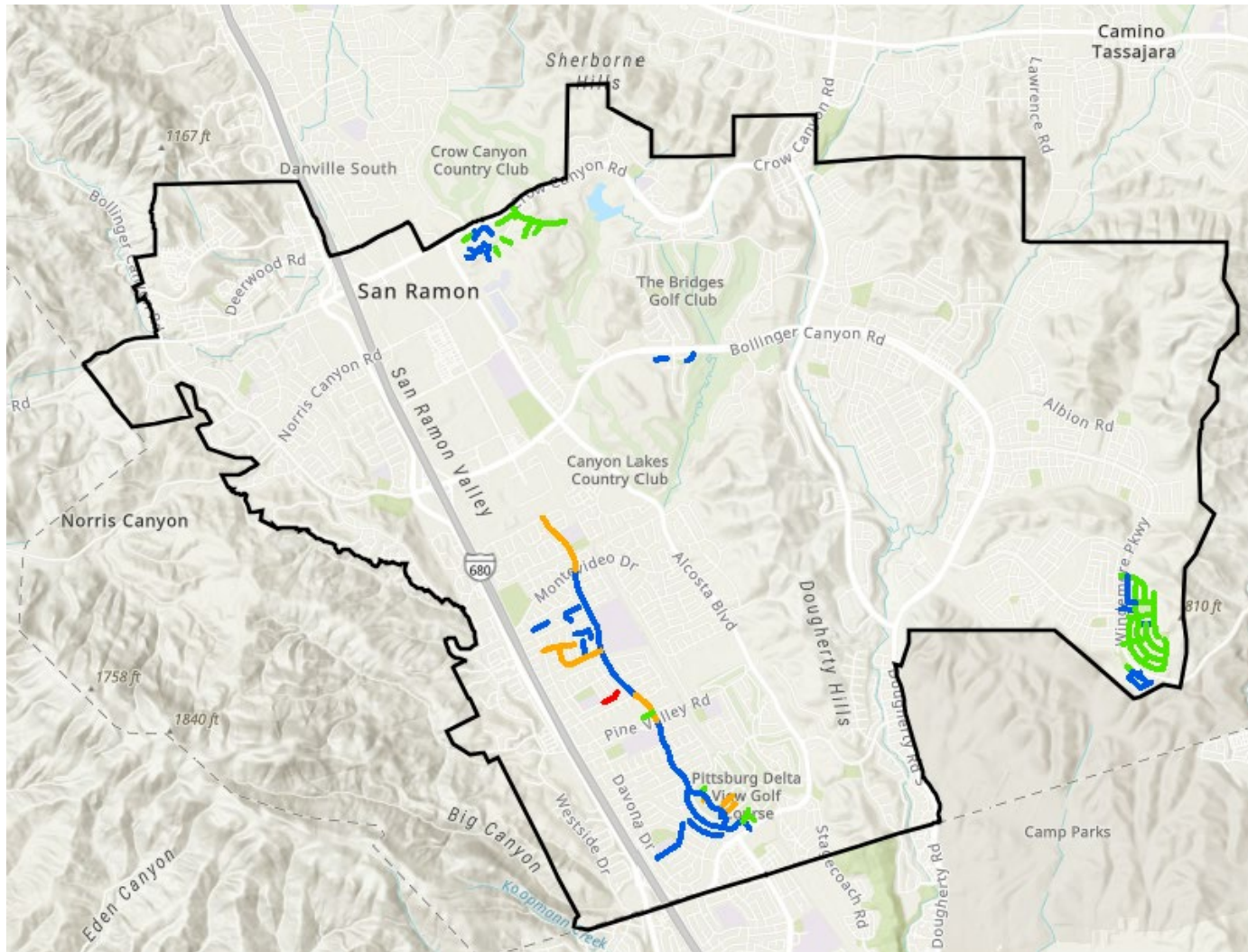


### LEGEND

- LIGHT MAINTENANCE
- HEAVY MAINTENANCE
- LIGHT REHABILITATION
- HEAVY REHABILITATION

# Proposed Treatment Year

## Five Year Plan (FY 26/27 – 30/31) – 2029 Period

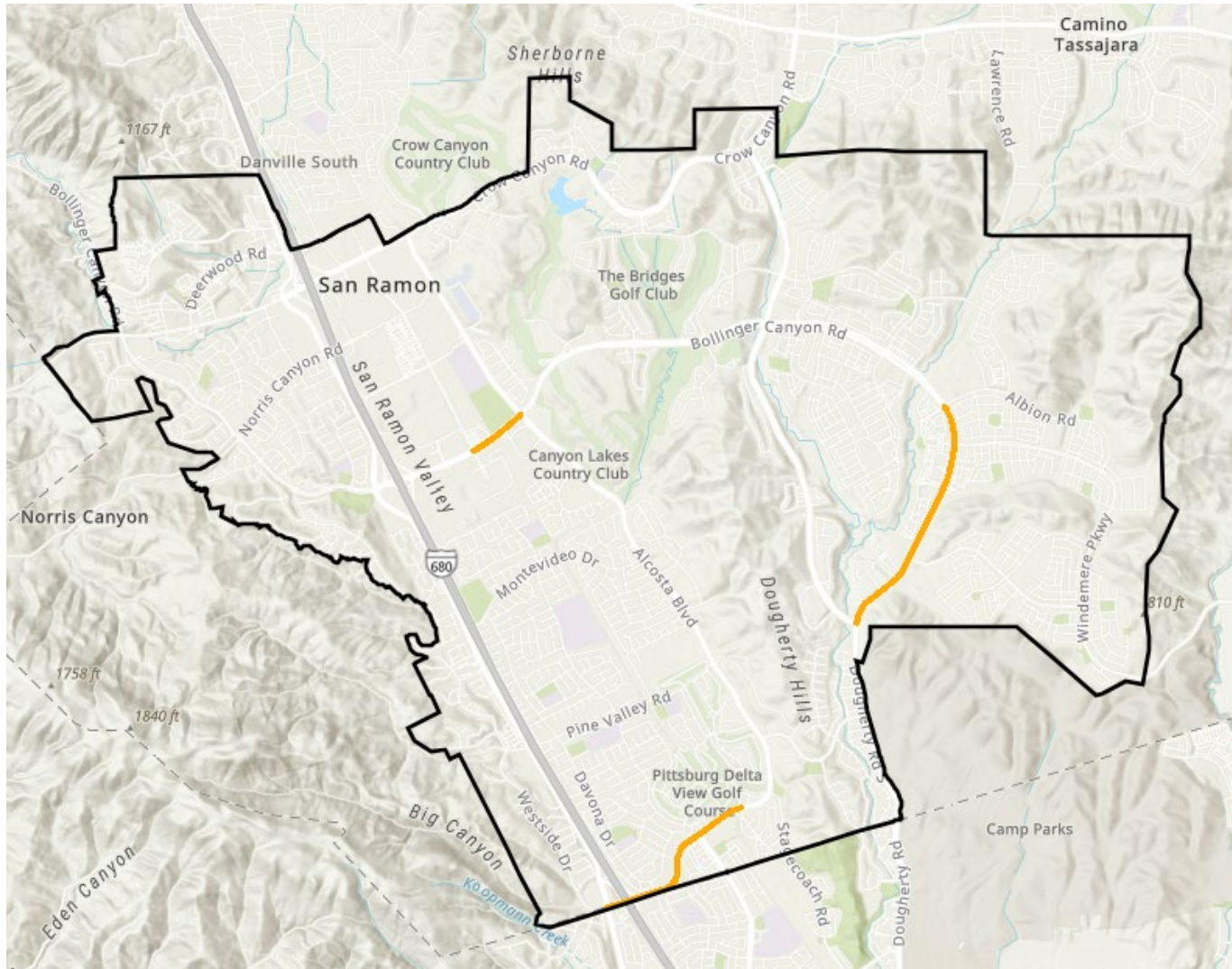


### LEGEND

- LIGHT MAINTENANCE
- HEAVY MAINTENANCE
- LIGHT REHABILITATION
- HEAVY REHABILITATION

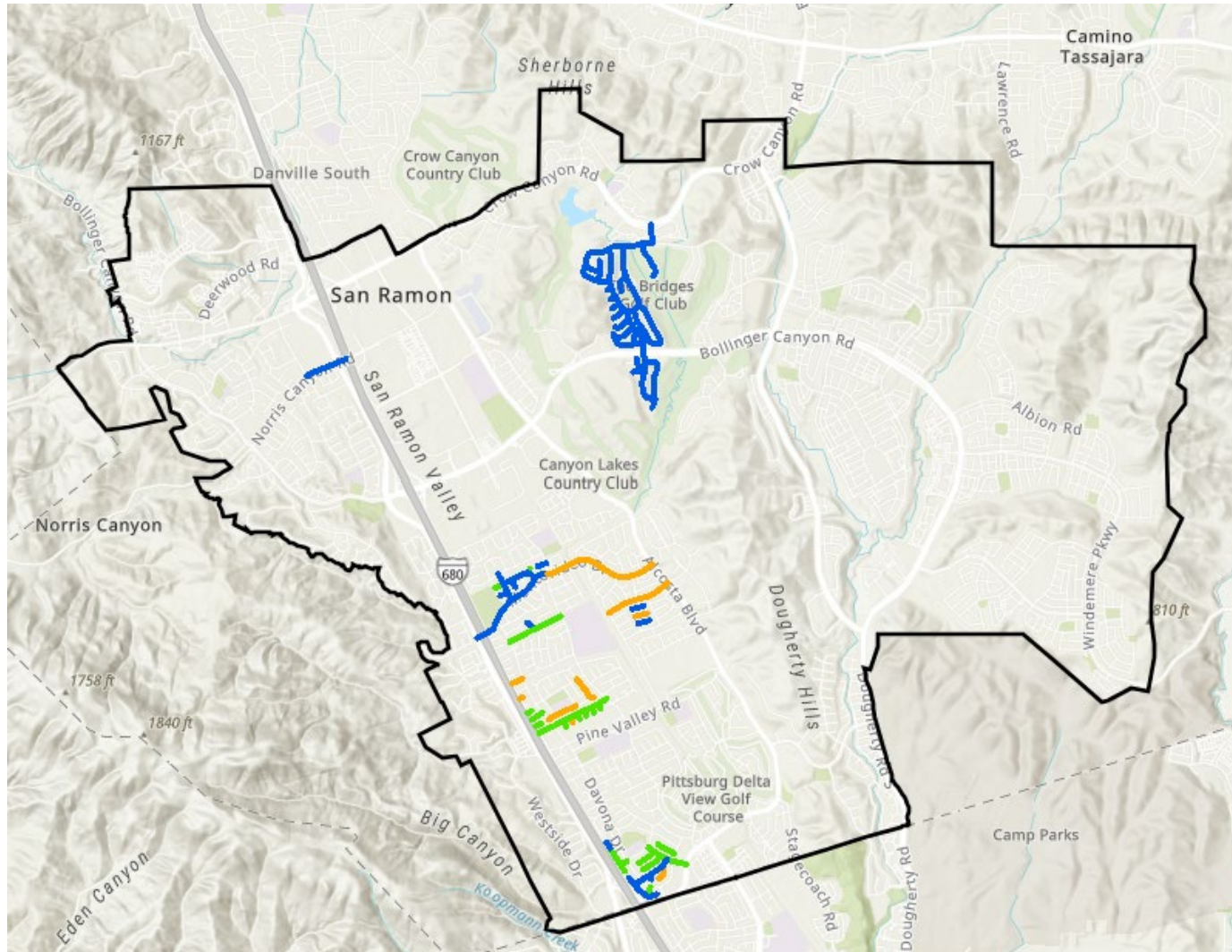
# Proposed Treatment Year

## Five Year Plan (FY 26/27 – 30/31) – 2030 Period



# Proposed Treatment Year

## Five Year Plan (FY 26/27 – 30/31) – 2031 Period



- LEGEND**
- LIGHT MAINTENANCE
  - HEAVY MAINTENANCE
  - LIGHT REHABILITATION
  - HEAVY REHABILITATION

Projected Five-Year Pavement Condition Index (PCI) Projections

